

WINCORE™

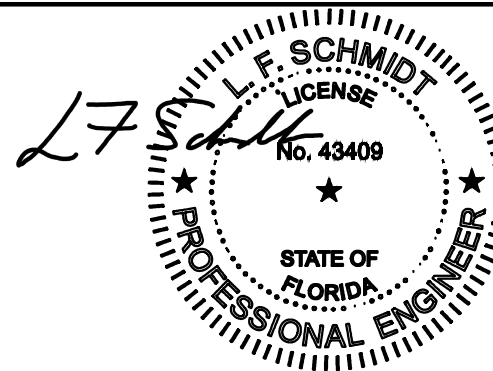
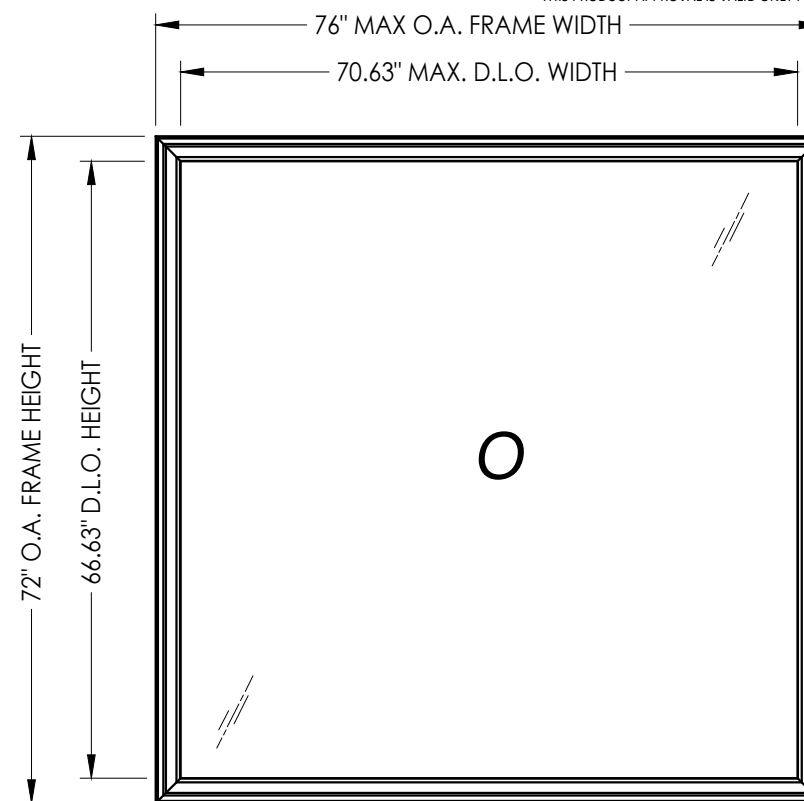
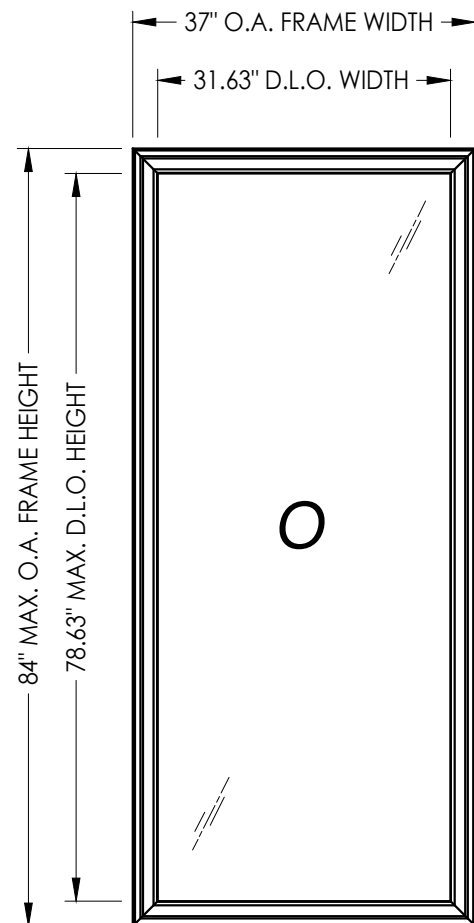
WINDOWS & DOORS

250 Staunton Turnpike, Parkersburg, WV 26104

8400 Series Vinyl Fixed Window "NON-IMPACT"

GENERAL NOTES

1. This product has been evaluated and is in compliance with the 8th Edition (2023) Florida Building Code (FBC) structural requirements excluding the "High Velocity Hurricane Zone" (HVHZ).
2. Product anchors shall be as listed and spaced as shown on details. Anchor embedment to base material shall be beyond wall dressing or stucco.
3. When used in areas requiring wind borne debris protection this product is required to be protected with an impact resistant covering that complies with FBC Sections 1609.1.2 & R301.2.1.2.
4. For 2x stud framing construction, anchoring of these units shall be the same as that shown for 2x buck masonry construction.
5. Site conditions that deviate from the details of this drawing require further engineering analysis by a licensed engineer or registered architect.



This item has been digitally signed and sealed by L. F. Schmidt, P.E. on the date adjacent to the seal. Printed copies of this document are not considered signed and sealed and the signature must be verified on any electronic copies.

THIS PRODUCT APPROVAL IS VALID ONLY FOR THE STATE OF FLORIDA

MAX. FRAME DIMENSION	MAX. D.L.O. DIMENSION	GLASS TYPE	DESIGN PRESSURE (PSF)	
			POSITIVE	NEGATIVE
37.0" X 84.0"	31.63" X 78.63"	G2	+65.0	-65.0
48.0" X 60.0"	42.63" X 54.63"	G1	+50.0	-50.0
64.0" X 64.0"	58.63" X 58.63"	G3	+65.0	-65.0
72.0" X 72.0"	66.63" X 66.63"	G2	+55.0	-65.0
		G3	+50.0	-50.0
76.0" X 63.0"	70.63" X 57.63"	G4	+80.0	-80.0

NOTE: Maximum frame width and height occur on separate units.

SHEET#	DESCRIPTION
1	Typical elevations, design pressures and general notes
2	Horizontal cross sections
3	Buck anchoring
4	Frame anchoring
5	Bill of materials, components and glazing details

Documents Prepared By:
Lyndon F. Schmidt
P.E. No. 43409

PRODUCT:
8400 SERIES
VINYL FIXED WINDOW

PART OR ASSEMBLY:
TYPICAL ELEVATION, DESIGN
PRESSURES & GENERAL NOTES

NO.	DATE	REVISIONS
5	7/06/23	UPDATE TO 8TH ED. (2023) FBC
4	7/06/20	UPDATE TO 7TH ED. (2020) FBC
3	6/01/17	UPDATE TO 6TH ED. (2017) FBC
2	1/28/15	UPDATE TO 5TH ED. (2014) FBC
1	4/02/13	ADDED NEW FRAME SIZE
		NO. DATE

DATE: 8/2/12

SCALE: N.T.S.

DWG. BY: JK

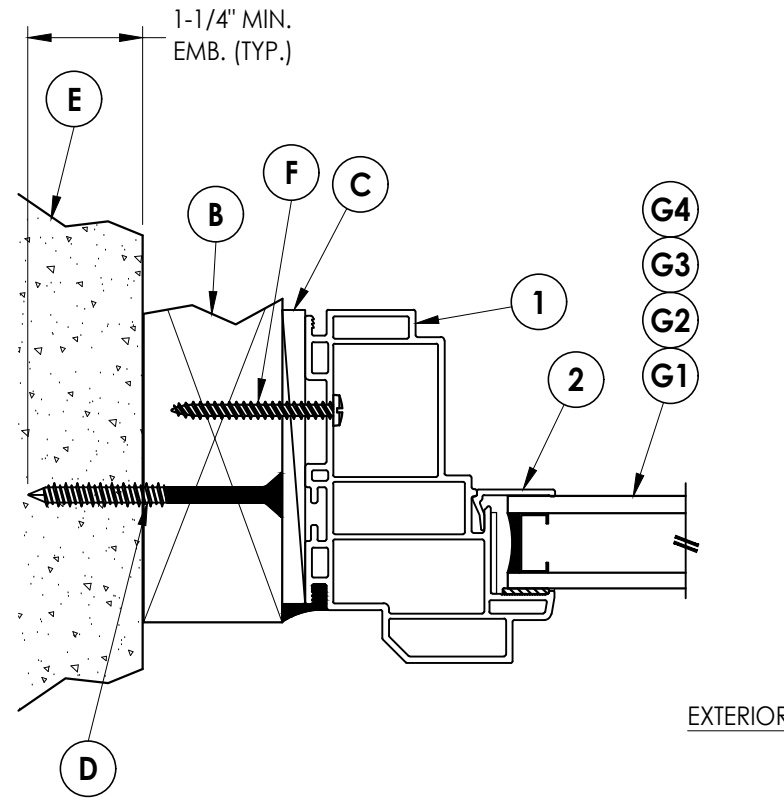
CHK. BY: LFS

DRAWING NO.:

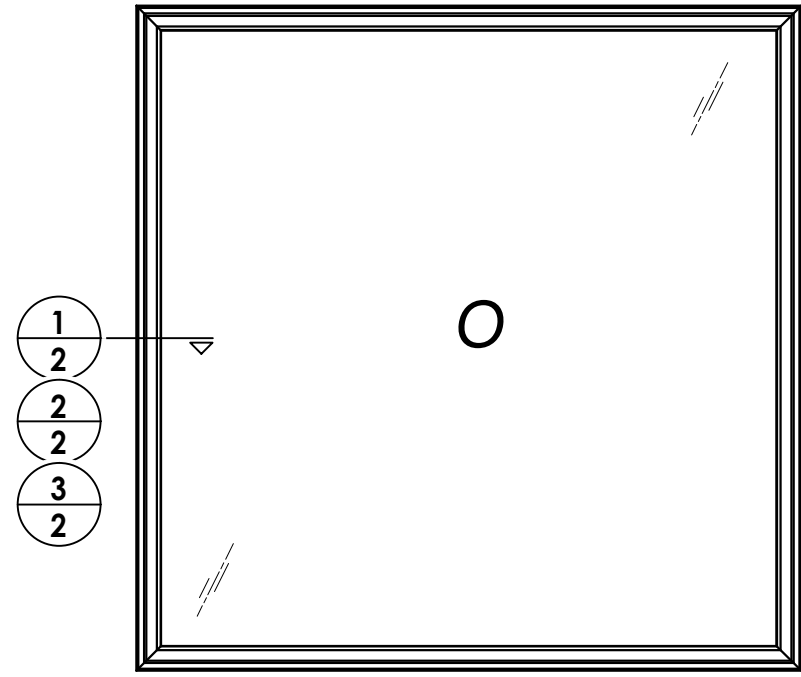
FL-15816.1

SHEET 1 OF 5

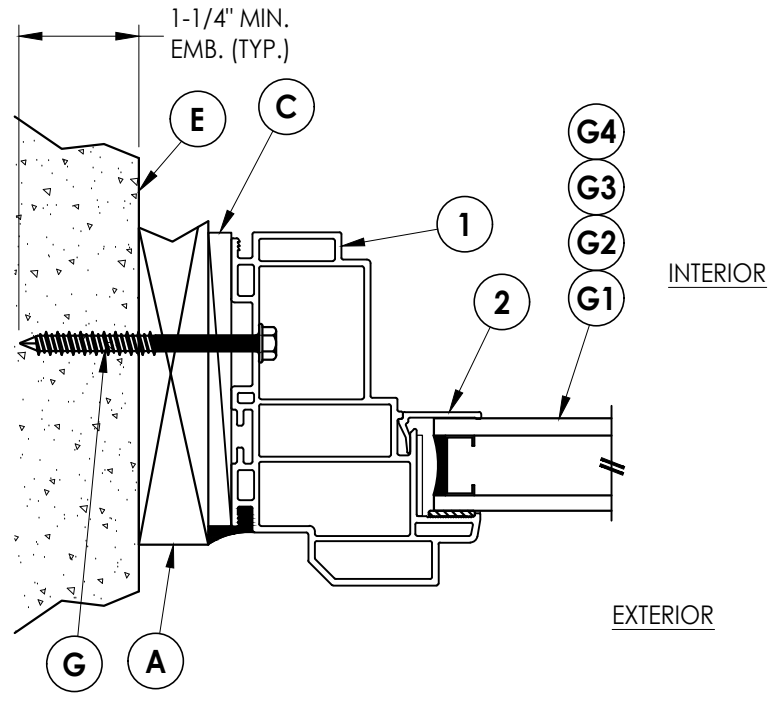
RW BUILDING CONSULTANTS, INC.
P.O. Box 230, Vairico, FL 33595
Phone No.: 813.659.9197
FBPE Registry No. 9813



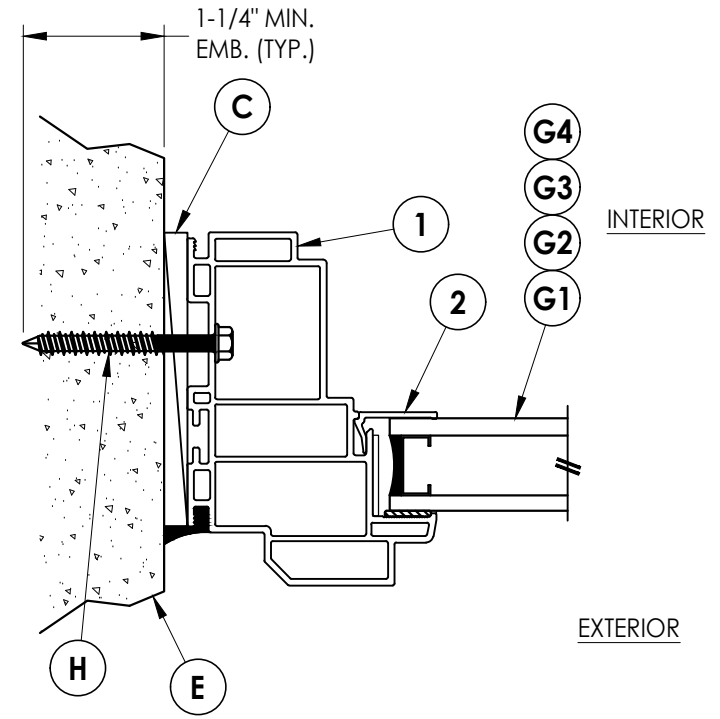
1 HORIZONTAL CROSS SECTION
2 Shown w/ 2X buck



1
2
2
3
2

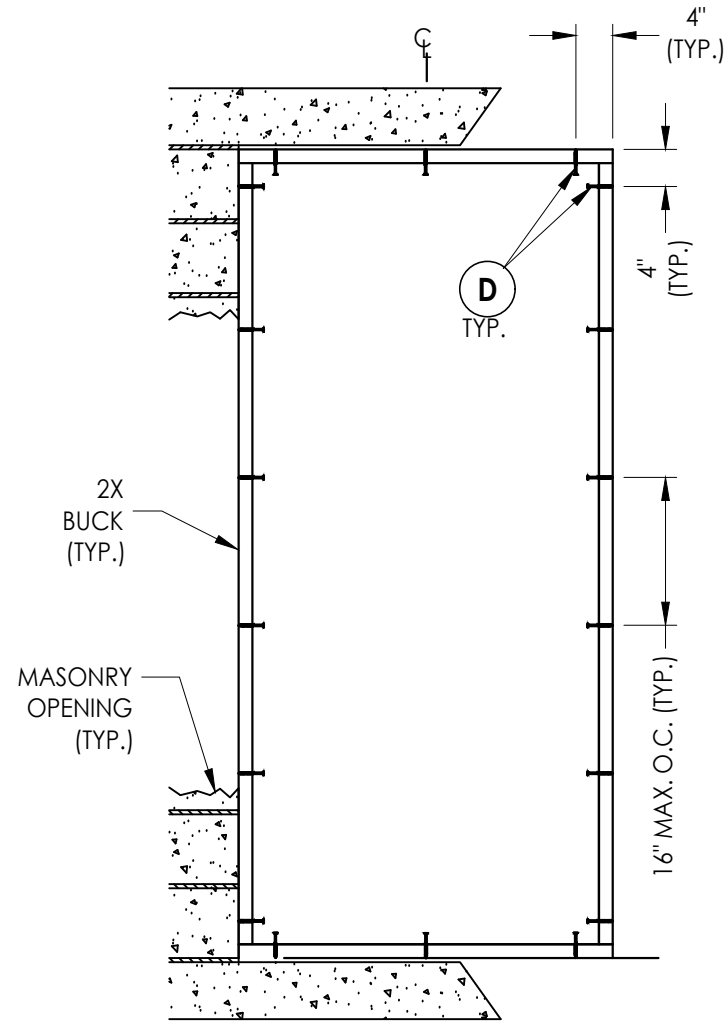


2 HORIZONTAL CROSS SECTION
2 Shown w/ 1X buck

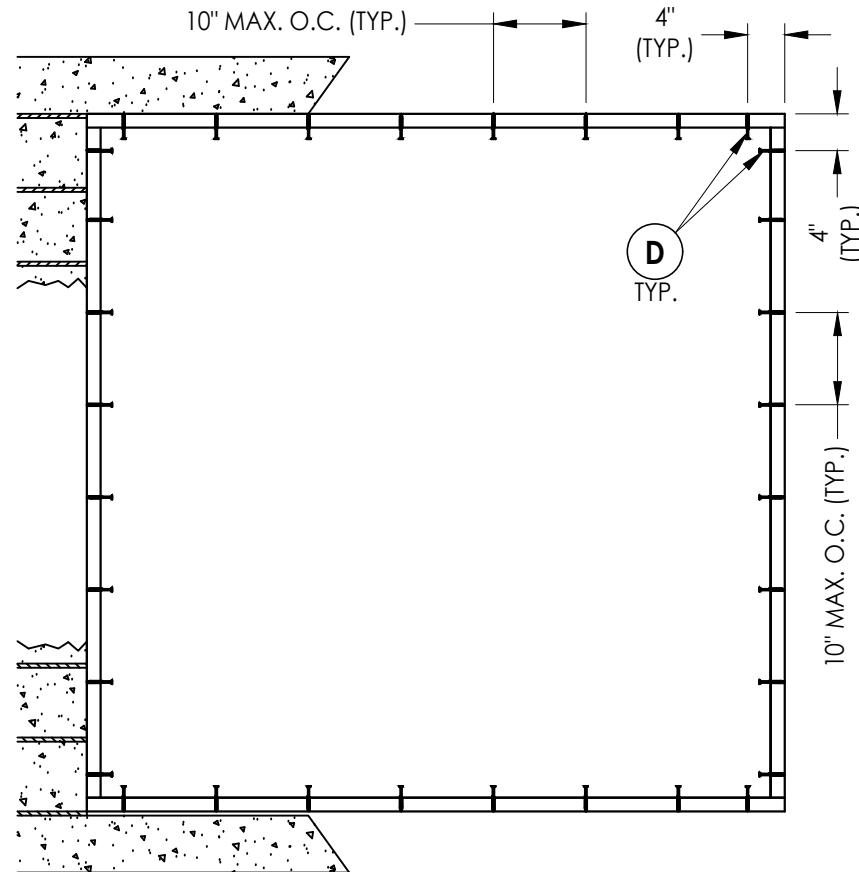


3 HORIZONTAL CROSS SECTION
2 Shown direct to masonry

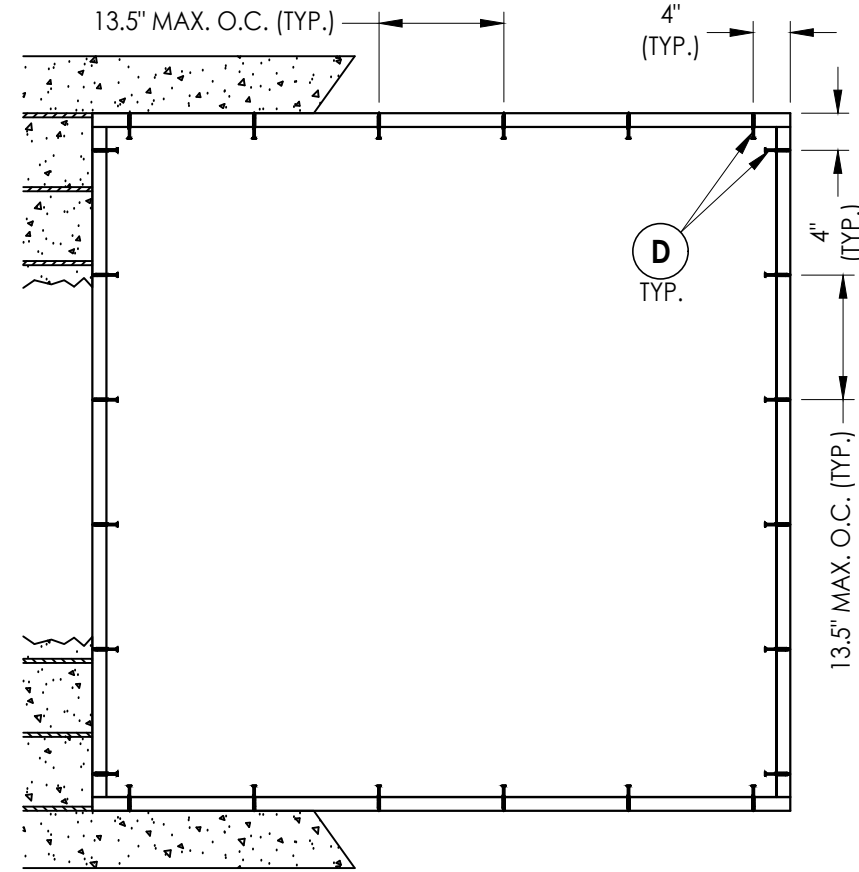
Documents Prepared By: Lyndon F. Schmidt P.E. No. 43409		8400 SERIES VINYL FIXED WINDOW		BUILDING CONSULTANTS, INC. P.O. Box 230, Vairico, FL 33595 Phone No.: 813.659.9197 FBPE Registry No. 9813	
PRODUCT:		PART OR ASSEMBLY:		REVISIONS	
5	7/06/23	UPDATE TO 8TH ED. (2023)	FBC	LFS	BY
4	7/06/20	UPDATE TO 7TH ED. (2020)	FBC	LFS	
3	6/01/17	UPDATE TO 6TH ED. (2017)	FBC	LFS	
2	1/28/15	UPDATE TO 5TH ED. (2014)	FBC	JK	
1	4/02/13	ADDED NEW FRAME SIZE			
NO.	DATE				
DATE: 8/2/12					
SCALE: N.T.S.					
DWG. BY: JK					
CHK. BY: LFS					
DRAWING NO.: FL-15816.1					
SHEET 2 OF 5					



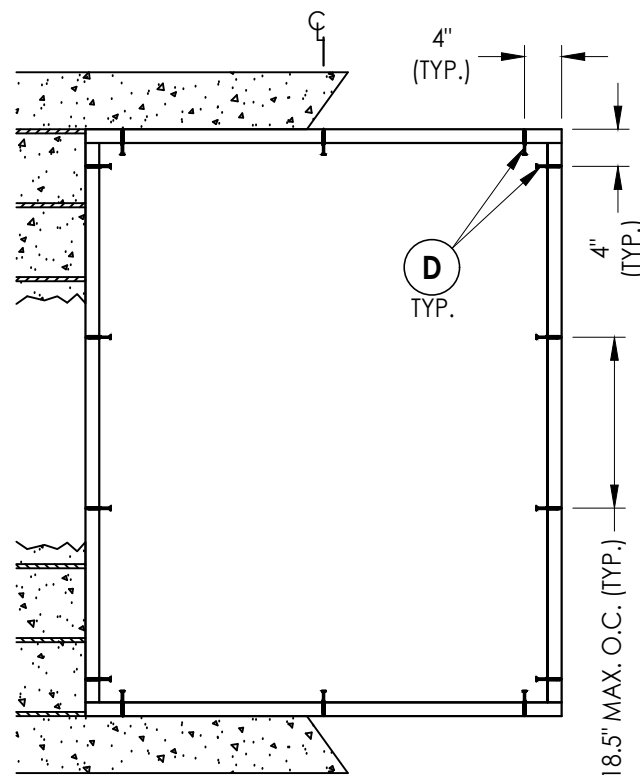
BUCK ANCHORING
37" X 84" MAX
DP ≤ 65 PSF



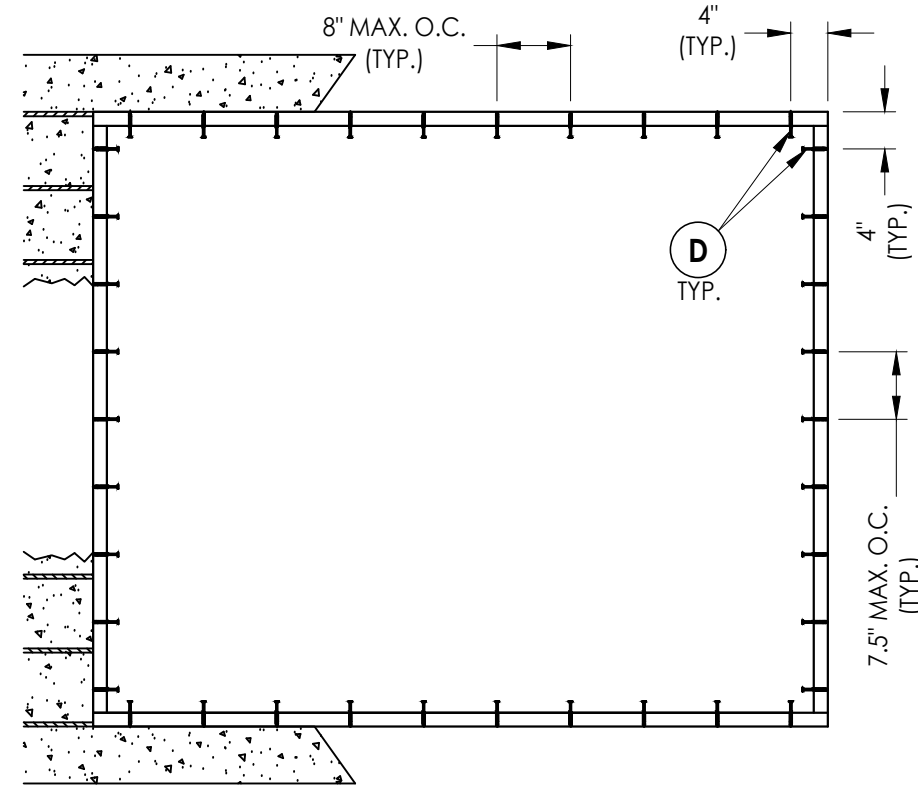
BUCK ANCHORING
72" X 72" MAX
DP ≤ 65 PSF



BUCK ANCHORING
72" X 72" MAX
DP ≤ 50 PSF



BUCK ANCHORING
48" X 60" MAX
DP ≤ 50 PSF



BUCK ANCHORING
76" X 63" MAX
DP ≤ 80 PSF

CONCRETE ANCHOR NOTES:

1. Concrete anchor locations at the corners may be adjusted to maintain the min. edge distance to mortar joints.
2. Concrete anchor locations noted as "MAX. ON CENTER" must be adjusted to maintain the min. edge distance to mortar joints, additional concrete anchors may be required to ensure the "MAX. ON CENTER" dimension are not exceeded.
3. Concrete anchor table:

ANCHOR TYPE	ANCHOR SIZE	MIN. EMBEDMENT	MIN. CLEARANCE TO MASONRY EDGE	MIN. CLEARANCE TO ADJACENT ANCHOR
ITW TAPCON®	1/4"	1-1/4"	2"	4"
DeWALT ULTRACON®	1/4"	1-1/4"	1"	4"

WOOD SCREW INSTALLATION NOTES:

1. Maintain a minimum 5/8" edge distance, 1" end distance, & 1" o.c. spacing of wood screws to prevent the splitting of wood.

Documents Prepared By:
Lyndon F. Schmidt
P.E. No. 43409

RW BUILDING CONSULTANTS, INC.
P.O. Box 230, Valrico, FL 33595
Phone No.: 813.659.9197
FBPE Registry No. 9813

PRODUCT: 8400 SERIES VINYL FIXED WINDOW

PART OR ASSEMBLY: BUCK ANCHORING

NO.	DATE	DESCRIPTION	BY
5	7/06/23	UPDATE TO 8TH ED. (2023) FBC LFS	LFS
4	7/06/20	UPDATE TO 7TH ED. (2020) FBC LFS	LFS
3	6/01/17	UPDATE TO 6TH ED. (2017) FBC LFS	LFS
2	1/28/15	UPDATE TO 5TH ED. (2014) FBC JK	JK
1	4/02/13	ADDED NEW FRAME SIZE LFS	LFS
		REVISIONS	

DATE: 8/2/12

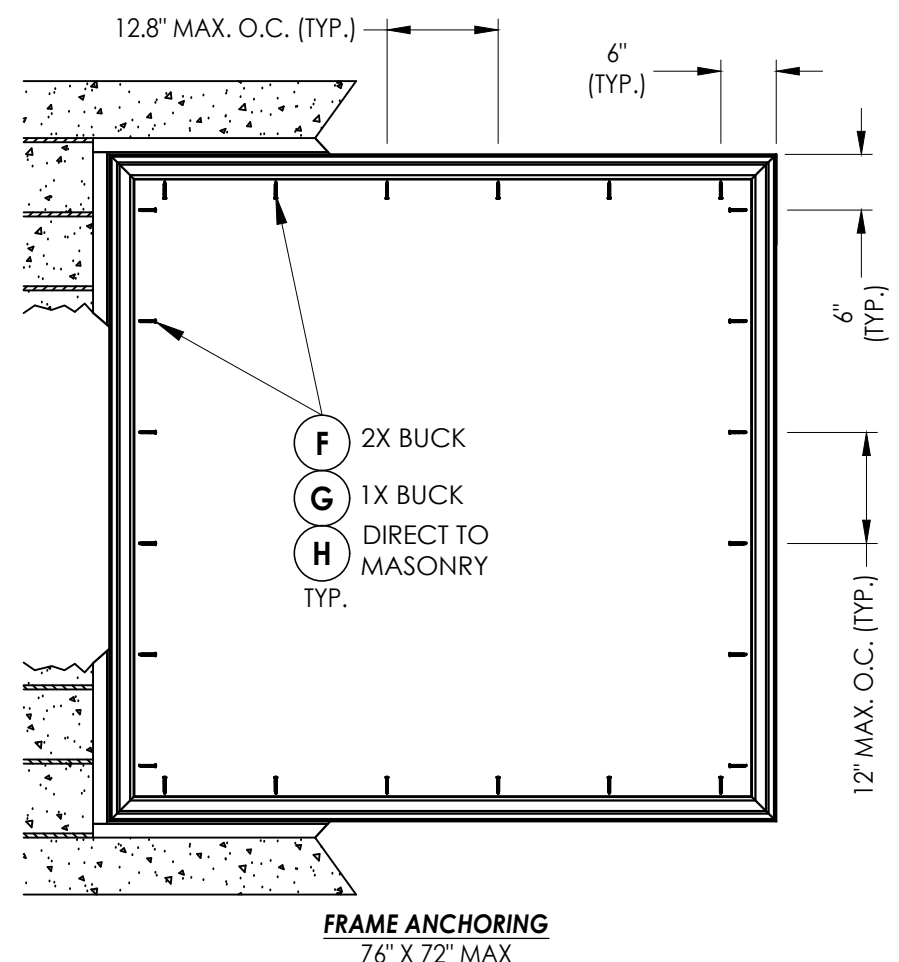
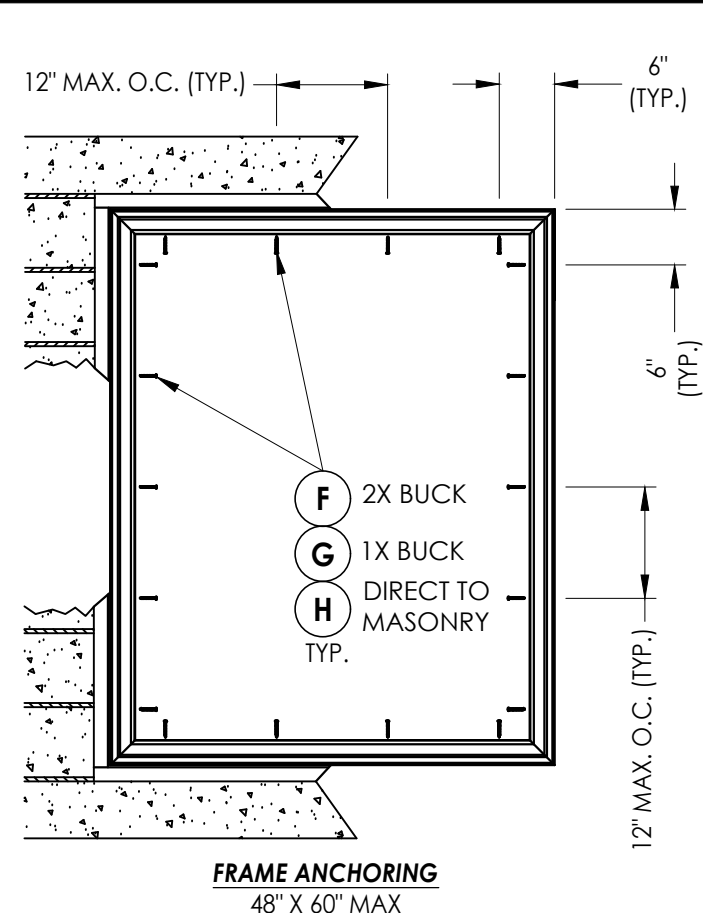
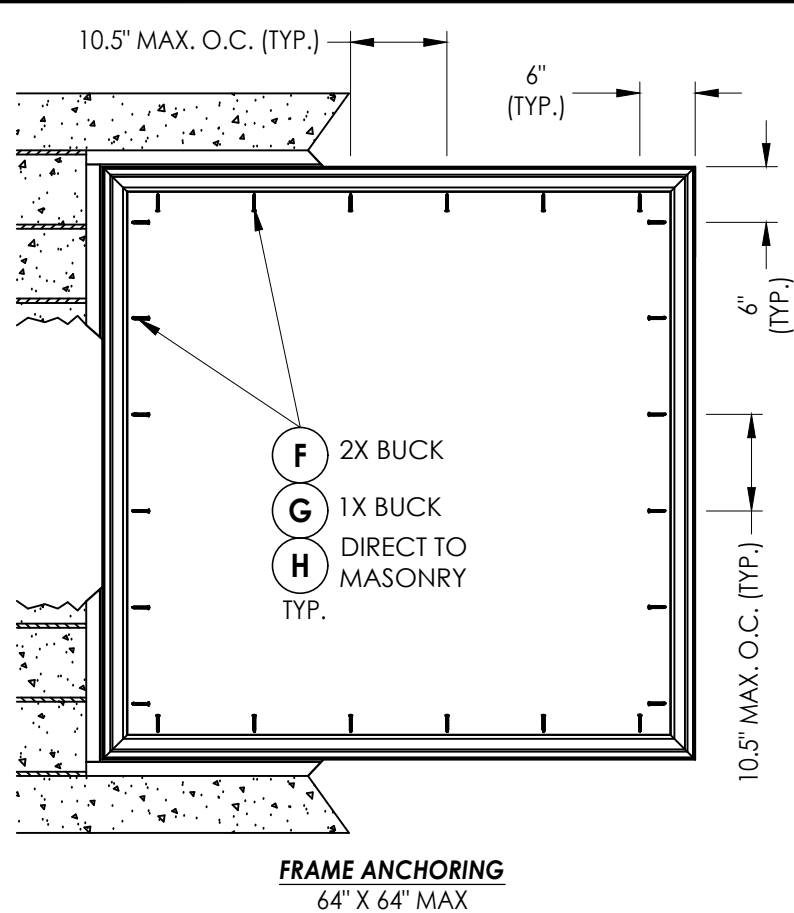
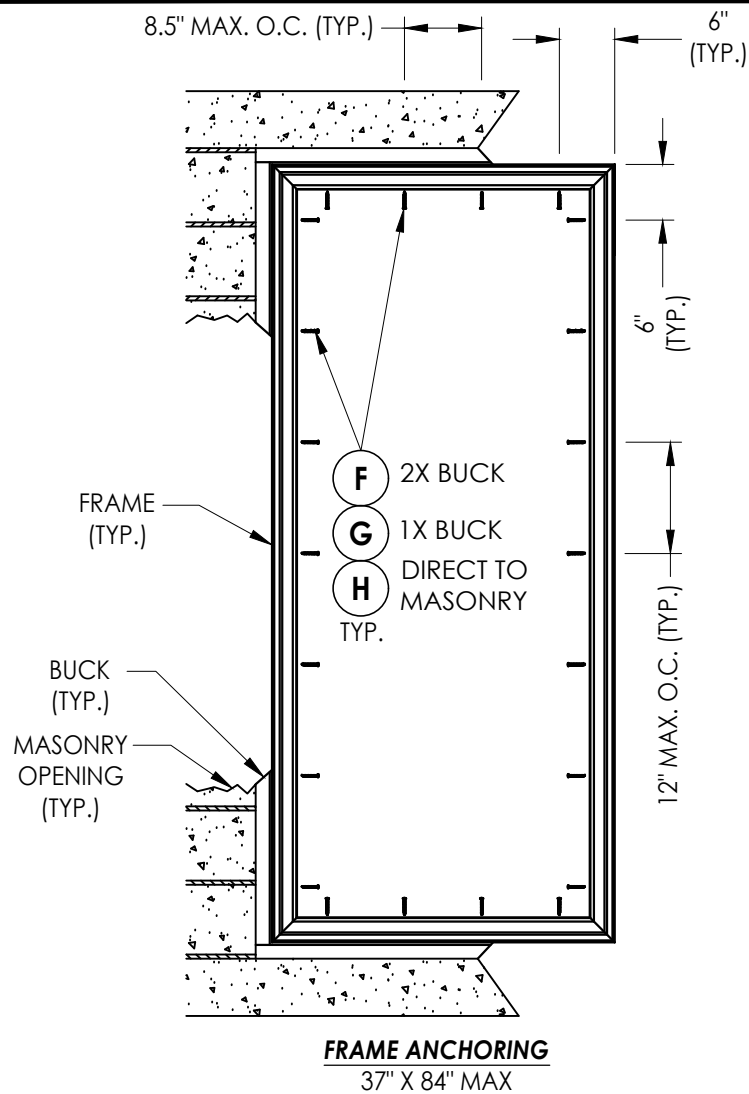
SCALE: N.T.S.

DWG. BY: JK

CHK. BY: LFS

DRAWING NO.: FL-15816.1

SHEET 3 OF 5



CONCRETE ANCHOR NOTES:

- Concrete anchor locations at the corners may be adjusted to maintain the min. edge distance to mortar joints.
- Concrete anchor locations noted as "MAX. ON CENTER" must be adjusted to maintain the min. edge distance to mortar joints, additional concrete anchors may be required to ensure the "MAX. ON CENTER" dimension are not exceeded.
- Concrete anchor table:

ANCHOR TYPE	ANCHOR SIZE	MIN. EMBEDMENT	MIN. CLEARANCE TO MASONRY EDGE	MIN. CLEARANCE TO ADJACENT ANCHOR
ITW TAPCON®	1/4"	1-1/4"	2"	4"
DeWALT ULTRACON+®	1/4"	1-1/4"	1"	4"

WOOD SCREW INSTALLATION NOTES:

- Maintain a minimum 5/8" edge distance, 1" end distance, & 1" o.c. spacing of wood screws to prevent the splitting of wood.

Documents Prepared By:
Lyndon F. Schmidt
P.E. No. 43409

RW BUILDING CONSULTANTS, INC.
P.O. Box 230, Vairico, FL 33595
Phone No.: 813.659.9197
FBPE Registry No. 9813

PRODUCT:
8400 SERIES
VINYL FIXED WINDOW

PART OR ASSEMBLY:
FRAME ANCHORING

NO.	DATE	REVISIONS	BY
5	7/06/23	UPDATE TO 8TH ED. (2023)	FBC
4	7/06/20	UPDATE TO 7TH ED. (2020)	FBC
3	6/01/17	UPDATE TO 6TH ED. (2017)	FBC
2	1/28/15	UPDATE TO 5TH ED. (2014)	FBC
1	4/02/13	ADDED NEW FRAME SIZE	LFS
			JK

DATE: 8/2/12

SCALE: N.T.S.

DWG. BY: JK

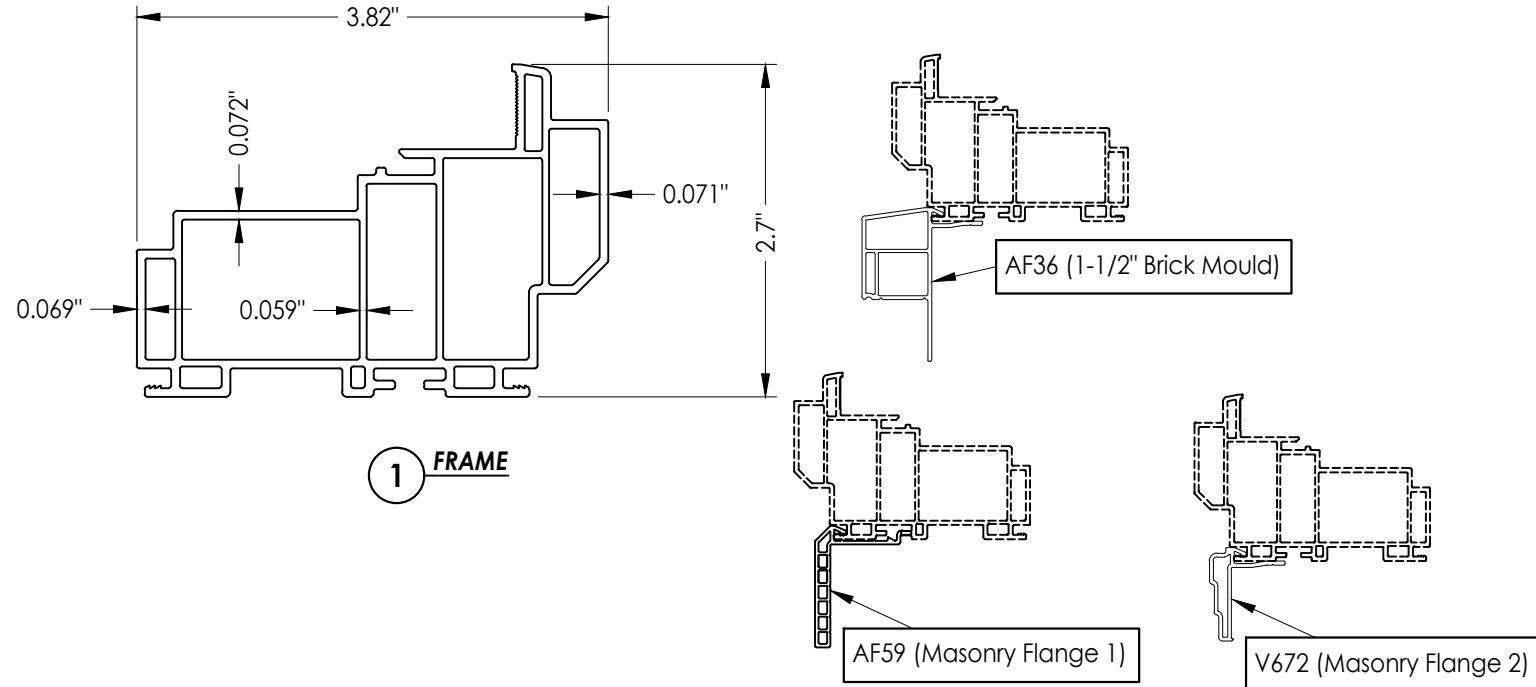
CHK. BY: LFS

DRAWING NO.: FL-15816.1

SHEET 4 OF 5

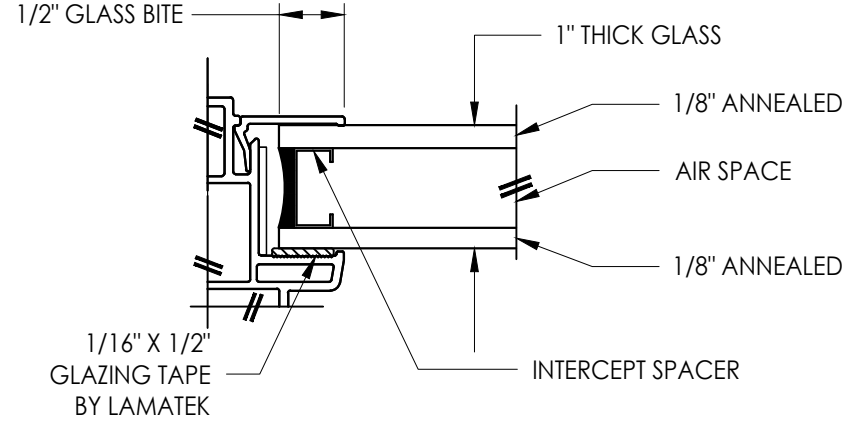
BILL OF MATERIALS		
ITEM #	DESCRIPTION	MATERIAL
A	1X BUCK (SG >= 0.42)	WOOD
B	2X BUCK (SG >= 0.42)	WOOD
C	1/4" MAX. SHIM SPACE	-
D	1/4" X 2-3/4" PFH DeWALT OR ITW CONCRETE SCREW	STEEL
E	MASONRY - 3,000 PSI MIN. CONCRETE CONFORMING TO ACI 301 OR HOLLOW BLOCK CONFORMING TO ASTM C90	CONCRETE
F	#10 X 1-3/4" PPH WOOD SCREW (1-3/16" MIN. EMBEDMENT)	STEEL
G	1/4" X 2-3/4" HWH DeWALT OR ITW CONCRETE SCREW	STEEL
H	1/4" X 2-1/4" HWH DeWALT OR ITW CONCRETE SCREW	STEEL
1	FRAME (PI7701WH)*	PVC
2	1" GLAZING BEAD (BV56WH)*	PVC

* THE APPROVED WHITE RIGID PVC EXTRUSIONS FOR WINDOWS ARE TO BE PRODUCED BY EXTRUDERS LICENSEES IN "AAMA CERTIFICATION PROGRAMS FOR RIGID PVC EXTRUSIONS".

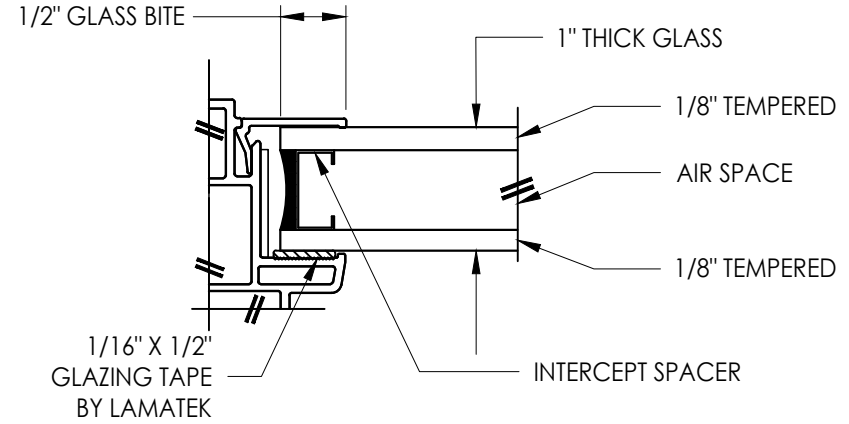


1 FRAME

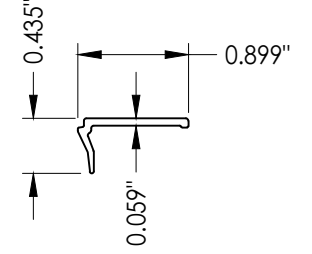
OPTIONAL COSMETIC FLANGES



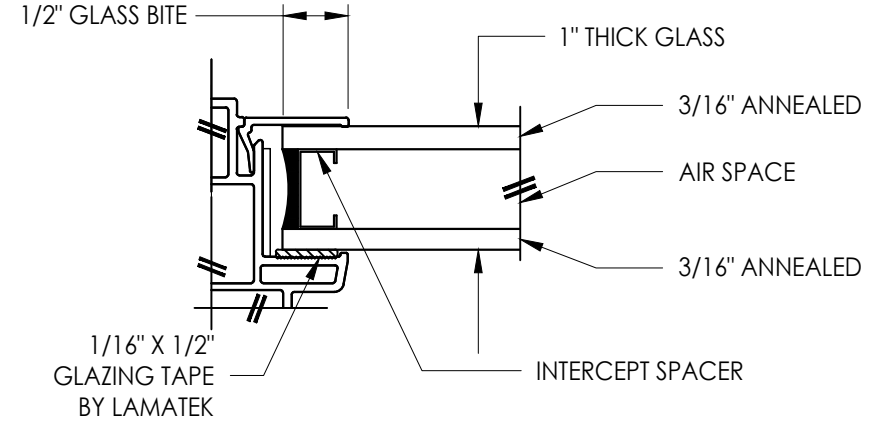
G1 GLAZING DETAIL



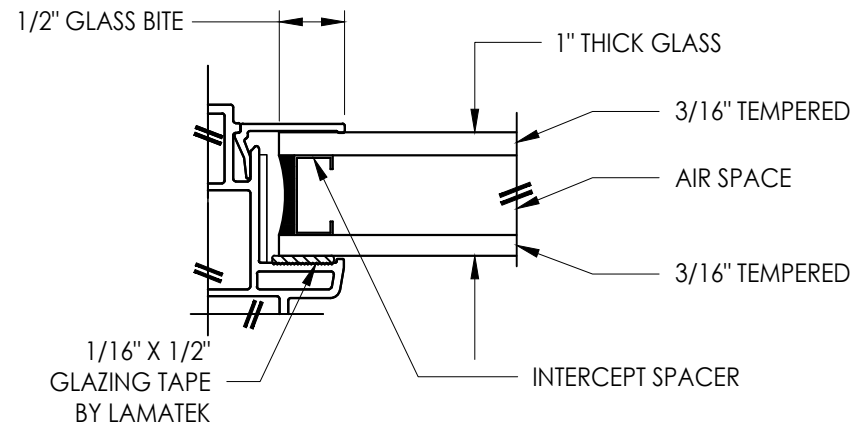
G2 GLAZING DETAIL



2 GLAZING BEAD



G3 GLAZING DETAIL



G4 GLAZING DETAIL

Documents Prepared By:
Lyndon F. Schmidt
P.E. No. 43409

RW BUILDING CONSULTANTS, INC.
P.O. Box 230, Vairico, FL 33595
Phone No.: 813.659.9197
FBPE Registry No. 9813

PRODUCT: 8400 SERIES VINYL FIXED WINDOW
PART OR ASSEMBLY: BILL OF MATERIALS, COMPONENTS AND GLAZING DETAILS

NO.	DATE	DESCRIPTION	BY
5	7/06/23	UPDATE TO 8TH ED. (2023) FBC	LFS
4	7/06/20	UPDATE TO 7TH ED. (2020) FBC	LFS
3	6/01/17	UPDATE TO 6TH ED. (2017) FBC	LFS
2	1/28/15	UPDATE TO 5TH ED. (2014) FBC	JK
1	4/02/13	ADDED NEW FRAME SIZE	LFS
			BY

DATE: 8/2/12
SCALE: N.T.S.
DWG. BY: JK
CHK. BY: LFS
DRAWING NO.: FL-15816.1
SHEET 5 OF 5